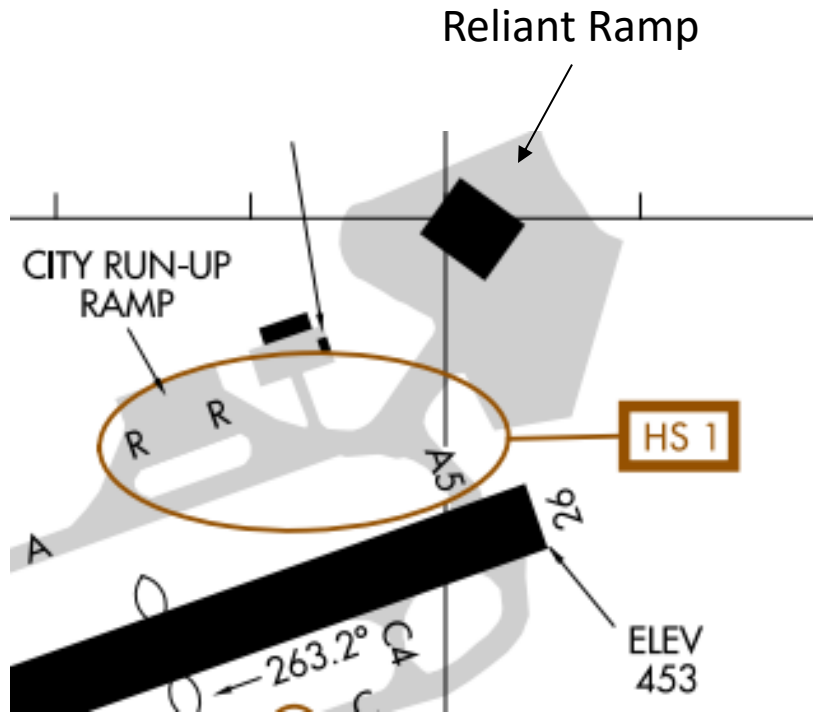


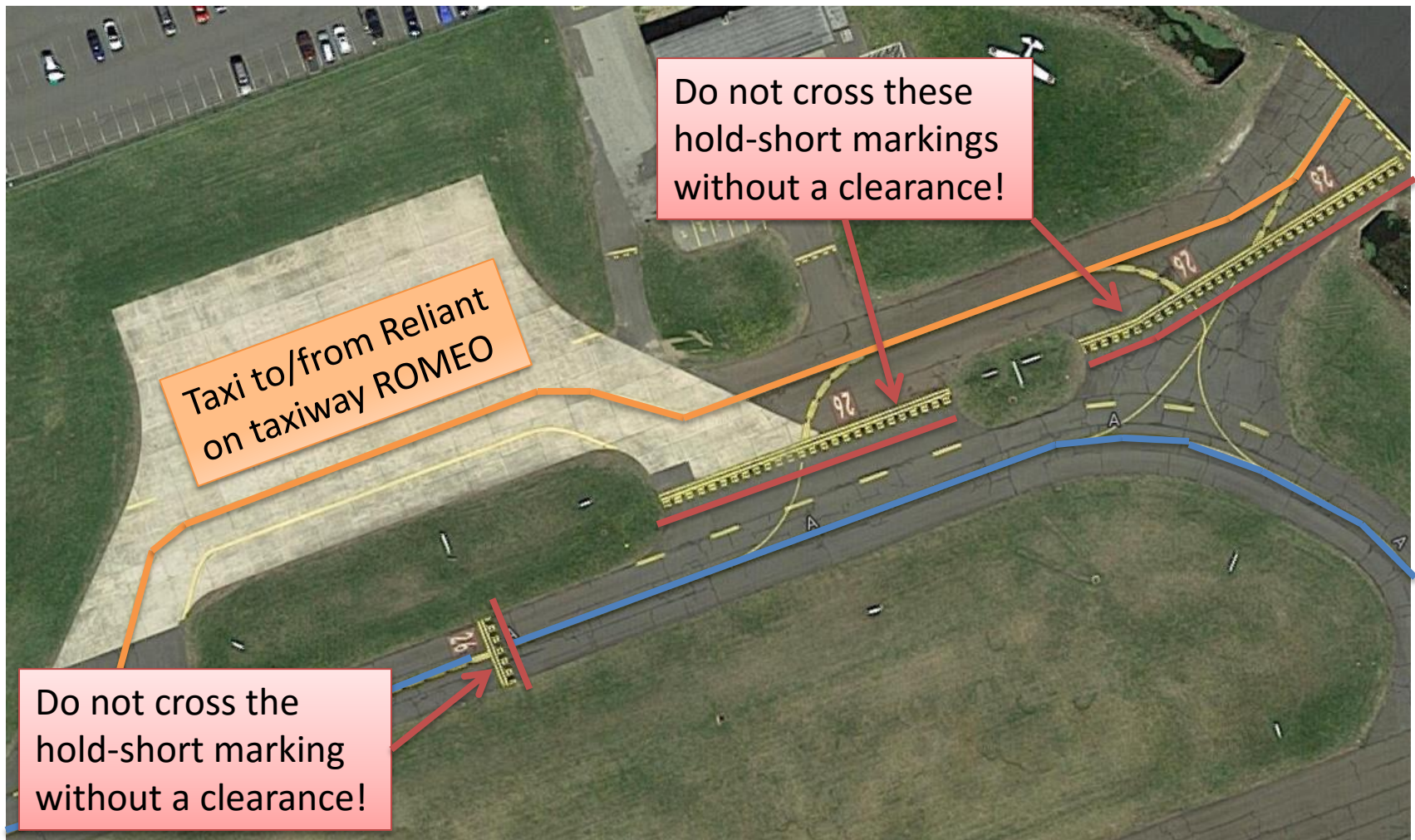
# Taxiways Romeo & Alpha



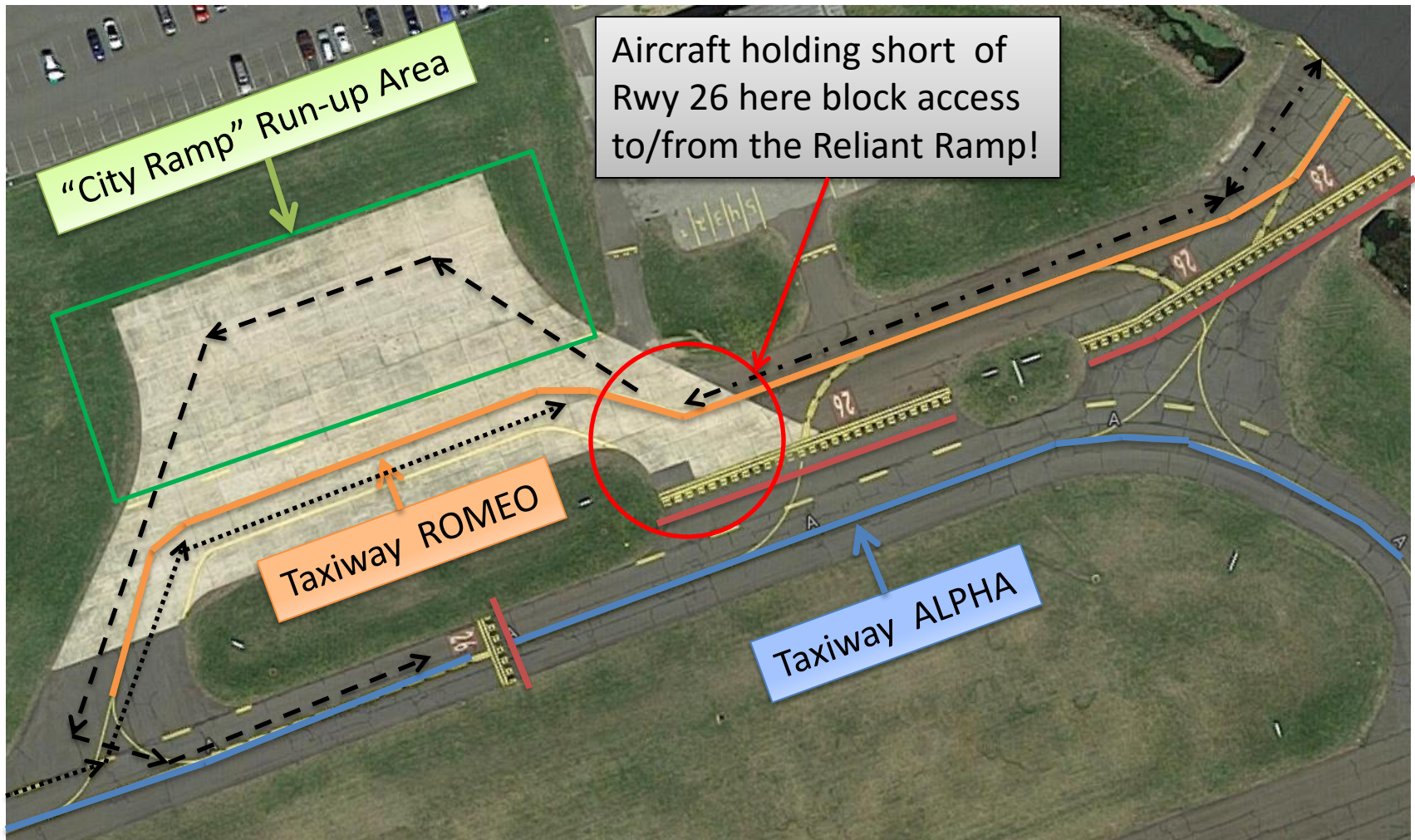
- Due to the design of taxiways Romeo and Alpha, this area is marked as a Hotspot (“HS 1”) on the KDXR airport diagram.
- More than one pilot has *unknowingly crossed the hold-short lines to Runway 26, thus causing a runway incursion!*

There are also 3 other airport hotspots for KDXR – be sure to review them all

# Taxiways Romeo & Alpha



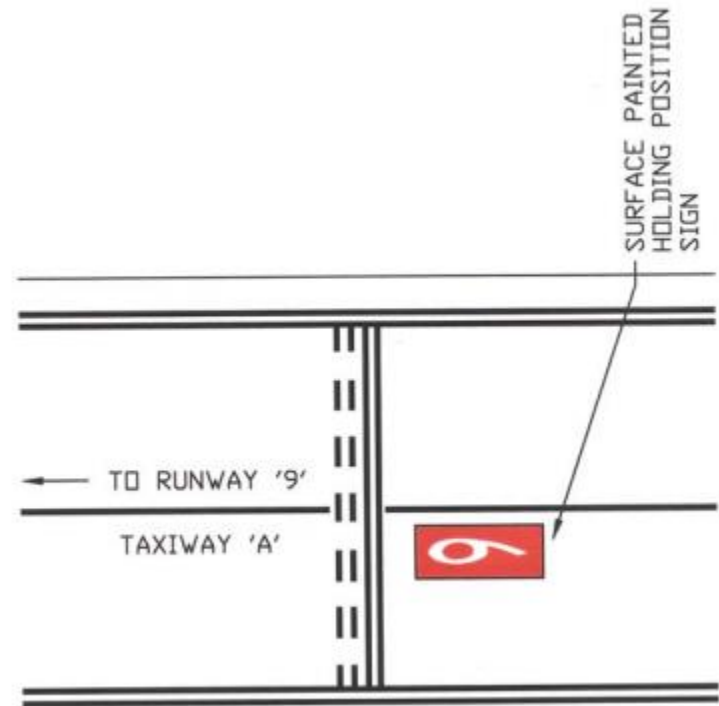
# Taxiways Romeo & Alpha



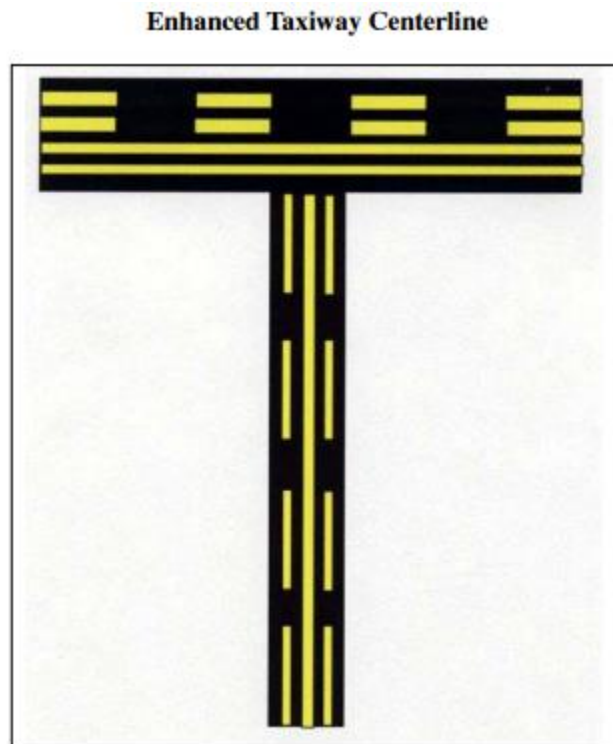


# Holding Position Markings

- **Surface painted holding position signs** have a red background with a white inscription and supplement the signs located at the holding position. It is located to the left side of the taxiway centerline on the holding side and prior to the holding position marking.



# Holding Position Markings



- The taxiway centerlines are enhanced for a maximum of 150 feet prior to a runway holding position marking. The purpose of this enhancement is to warn the pilot that he/she is approaching a runway holding position marking and should **prepare to stop unless he/she has been cleared onto or across the runway by ATC.**

# Holding Position Markings

- Notice the white-on-red “26” **surface painted holding position sign** on the left-side (pilot’s side) of the taxiway, just prior to the hold-short markings
- Also notice the **enhanced taxiway centerline** markings approaching the hold short line

